

Optional Products

Face Grabber™

- WiFi wireless dongle
- USB flash disk video storage
- USB hub to increase the number of USB ports
- **EnvGuard™** - detects temperatures, humidity and receives signals from up to 8 RF sensors. This includes smoke, gas, and burglar sensors.

Miscellaneous

- BioFace® Enrollment Station employs iSentinel™ software to record user face images and issue IC cards.



Electric Locks

- Electric Locks.
- Floating keypad used for controlled exiting.
- Card reader used for controlled exiting.
- Face Grabber™ is offered as a motherboard for system integrator to incorporate preferred existing displays or intercom systems.



Electric Sliding Doors

with Firmware Upgrade

- Fingerprint scanner
- 3G wireless network access
- EDGE wireless network access



RECOGNITION SECURITY

An Identix Authorized Application Developer

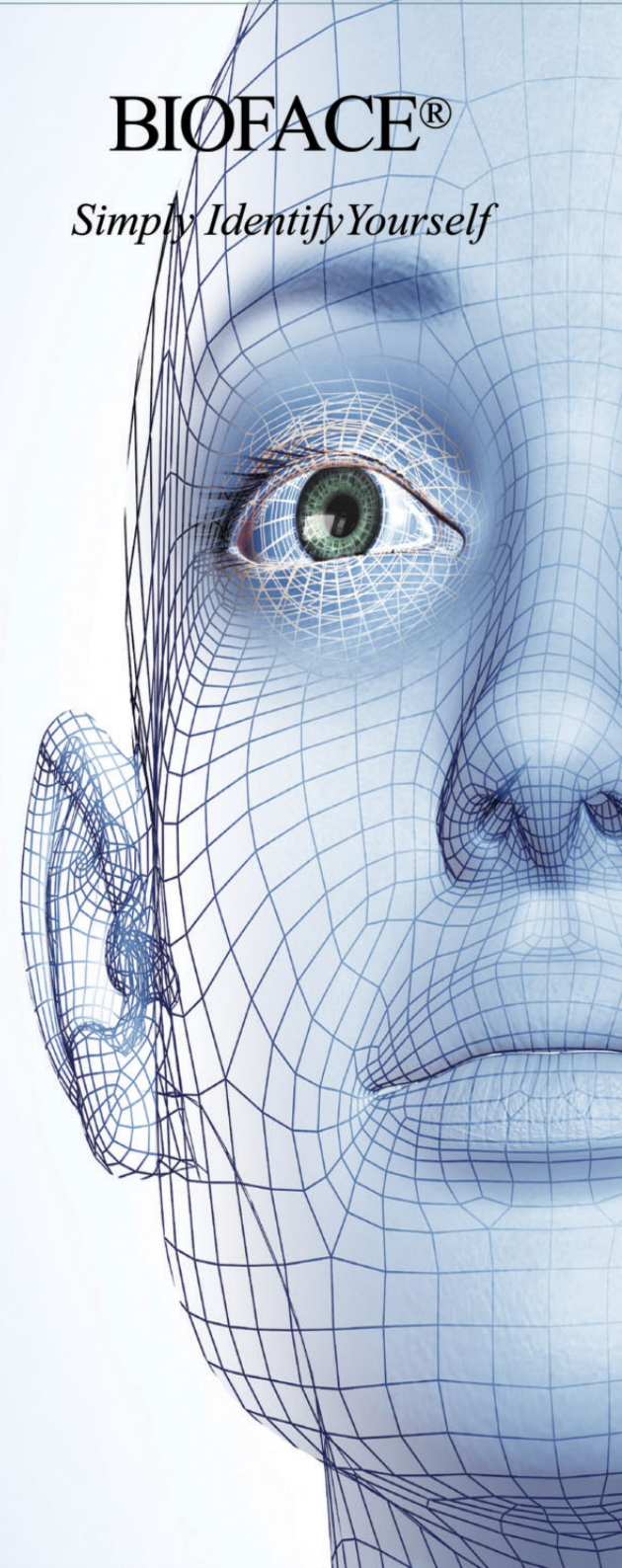
The Identix Exclusive Reseller in Japan Pachinko Gaming Industry of FaceIt®

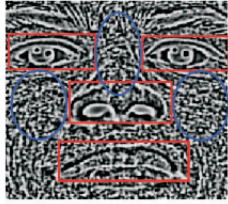
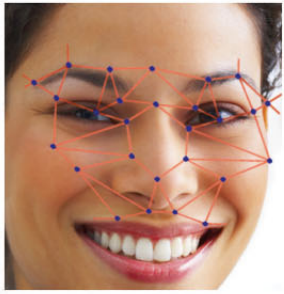
**Address: 1028 Sunswep Terrace
Plano, Texas 75075
U.S.A.**

**Http://www.recognitionsecurity.us
Toll Free: 800-508-0644
Phone: 469-628-9040**

BIOFACE®

Simply Identify Yourself





BioFace[®] ACCESS CONTROL SYSTEM

Recognition Security offers peace of mind to business owners with access control concerns.

BioFace[®] Access Control is powered by Identix FaceIt[®] G6 technology, which can distinguish between identical twins.

We deliver it in a package that is:

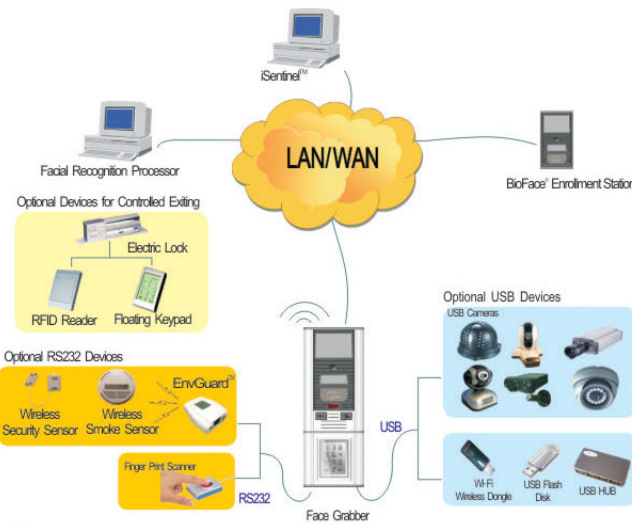
- Affordable
- Reliable
- Easy to Install
- Easy to Maintain
- Easy to Use

It is designed for businesses and is a natural match for enhancing casinos, prisons and jails, banks, schools, private clubs, airports, athletic stadiums and amusement parks.



SECURITY Simply Identify Yourself

NETWORKING BIOFACE[®] ACCESS CONTROL



Technical Specifications

Face Grabber[™]

- ARM9 video server, Linux operating system.
- Built-in 1.3 digital 1280x1024 high resolution camera.
- 4" TFT LCD for face image display (Optional).
- Philips MIFARE[®] RF IC card reader (for 1:1 verification mode).
- Automatic touch-less trigger 1:N Identification by infrared sensor.
- Floating digit keypad backup in case network connection is lost.
- Versatile out-pulse settings for lock control.
- 100M fast Ethernet network access to LAN/WAN.
- DC 5V/12V 2Amp.
- Dimension: 415(H)x135(W)x50(D) cm.
- Weight: 1.5kg.



BioFace[®] Access Control installation at banks and prisons

Facial Recognition Processor

- System Software: BioFace[®] Access Control System. Adopts Identix FaceIt[®] G6 verifies a person by facial skin texture.
- Recognition Mode: 1:1, 1:N or combinations of both.
- Recognition Time: less than 1 second when 1:1, less than 2 seconds when 1:N.
- Database Configuration: MS Access[®], SQL Server, Oracle and any database supports ODBC.
- Database Size: Unlimited.
- Network Access: 100M fast Ethernet access to LAN/WAN.
- Processor: Pentium4 1GB RAM and above. Can be structured as an array.

iSentinel[™]

- Remote real-time monitoring and retrieval system data through Ethernet.
- User management.
- Time scheduler and permission settings.
- Log management.
- Report generation.
- Real-time video surveillance, recording and re-play.
- Unlimited number of such instances in LAN/WAN simultaneously.